



SAFETY ALERT

Military Operation Area (MOA) M201 Ardmore

In recent months Ardmore Airport's SMS has highlighted infringements of MOA M201 restricted airspace by both fixed wing aircraft and helicopters. The main contributing factors appear to be a lack of adequate pre-flight planning and monitoring the location of aircraft in flight relative to airspace boundaries when navigating to/from Ardmore. M201 is **permanently active** with frequent live firing in progress day and night.

When tracking to/from the south and south-east of Ardmore, to avoid M201, it is preferable to track on the eastern or north-eastern side of the Waterworks VRP, or south of Red Hill VRP. **Do not** track between the Waterworks and Red Hill unless you are above 2300ft AMSL.

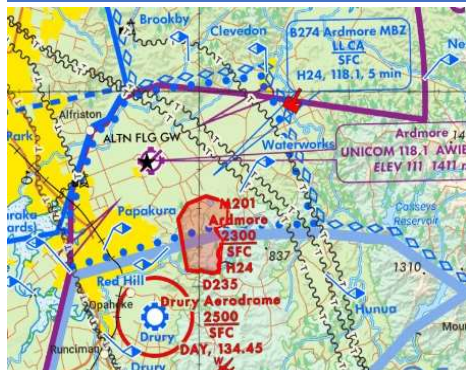
Take care not to track too wide in the downwind leg in the Ardmore circuit as the M201 lateral boundary is only 1.2nm SE of Runway 03/21.



Extending from the surface to 2300 feet and situated 2 NM east of Papakura town, this MOA is designated M201. Primarily for live firing but other military activity may take place, including Military Helicopters operating and RPAS operations (drones). It is active 24 hours a day. Note that the Ardmore MOA is permanently active, and its status is not broadcast on the Ardmore AWIB.

Military Operating Area (MOA) As the name suggests, is an area within which military operations, including live firing and the use of explosives, may take place. MOAs have the same entry and operational requirements as restricted areas. MOA21 is designated H24. This means 'permanently active', and unauthorised aircraft must remain clear at all times. Military operating areas are depicted on VNCs as Mxxx.

Review the Auckland VNC chart.



The New Zealand Defence Force Battle Training Facility (BTF) Ardmore

The Battle Training Facility has elements for all-weather training, live firing, use of helicopters, and scenario training based on specific environments and structures.